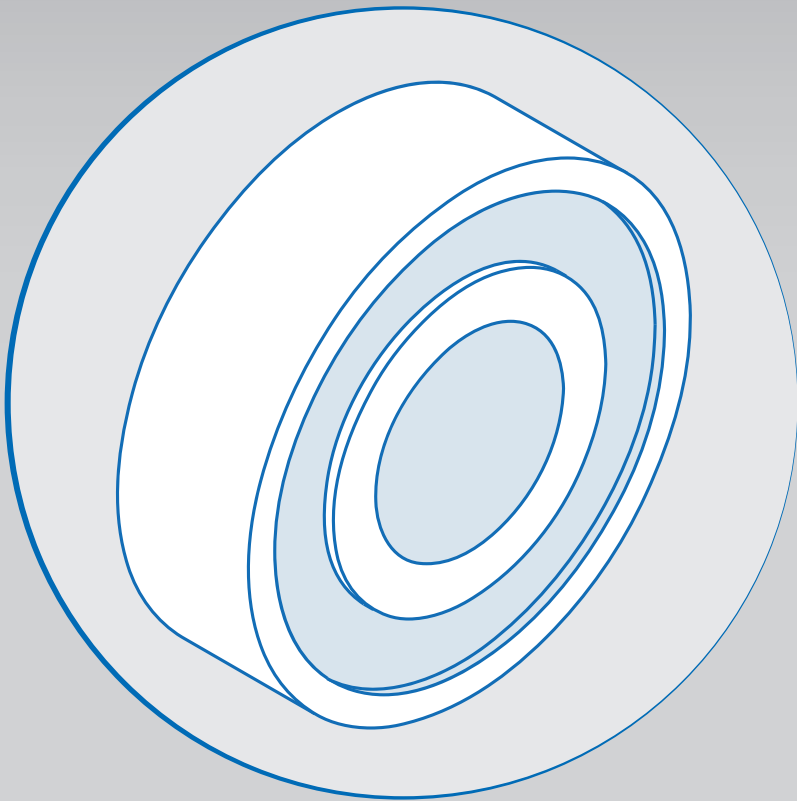




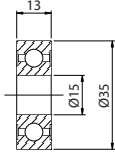
Bearing / Rodamiento



GR2790

FEATURES / CARACTERÍSTICAS: **Ball Bearings**

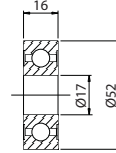
APPLICATION / APLICACIÓN: Alternator
Honda: 31111-PD1-004; John Deere: AR88019;
Nipodenso: 949100-3980; Toyota: 90099-10140
REPLACES / REEMPLAZA:



GR3330

FEATURES / CARACTERÍSTICAS: **Ball Bearings**

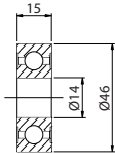
APPLICATION / APLICACIÓN: Alternator Ni-
podenso: 949100-4370; Toyota: 90099-10160,
90099-10192
REPLACES / REEMPLAZA:



GR3360

FEATURES / CARACTERÍSTICAS: **Ball Bearings**

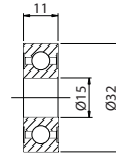
APPLICATION / APLICACIÓN: Alternator
Honda: 31114-PD1-034; Nipodenso: 949100-
3380, 949100-4620; Toyota: 90099-04966,
90099-10159, 90099-10161, 90099-10199
REPLACES / REEMPLAZA:



GR3660

FEATURES / CARACTERÍSTICAS: **Ball Bearings**

APPLICATION / APLICACIÓN: Alternator
Nipodenso: 94910-3670
REPLACES / REEMPLAZA:

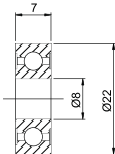


GR608

2RS/C3 (DDU)

FEATURES / CARACTERÍSTICAS: **Ball Bearings**

APPLICATION / APLICACIÓN: Industrial -
Automotive Windows FORD; GM; VW
REPLACES / REEMPLAZA:

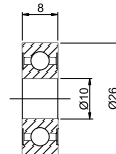


GR6000

2RS/C3 (DDU)

FEATURES / CARACTERÍSTICAS: **Ball Bearings**

APPLICATION / APLICACIÓN: For alternator
Delco Remy. For various industrial applications
REPLACES / REEMPLAZA:

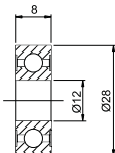


GR6001

2RS/C3 (DDU)

FEATURES / CARACTERÍSTICAS: **Ball Bearings**

APPLICATION / APLICACIÓN: For alternator
Kia: Asia, Besta and Topic, embreagem CG125
(Honda). For various industrial applications.
REPLACES / REEMPLAZA:

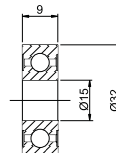


GR6002

2RS/C3 (DDU)

FEATURES / CARACTERÍSTICAS: **Ball Bearings**

APPLICATION / APLICACIÓN: For starter
Delco Remy. For various industrial applications.
REPLACES / REEMPLAZA:

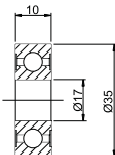


GR6003

2RS/C3 (DDU)

FEATURES / CARACTERÍSTICAS: **Ball Bearings**

APPLICATION / APLICACIÓN: For alternator
Bosch, Magneti Marelli: Fiat Palio, Yamaha
XT600. For various industrial applications.
REPLACES / REEMPLAZA:

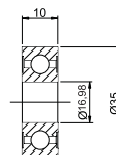


GR6003DW

2RS/C3 (DDU)

FEATURES / CARACTERÍSTICAS: **Ball Bearings**

APPLICATION / APLICACIÓN: Alternator M
Marelli Fiat Palio.

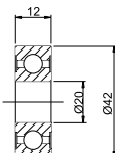


GR6004

2RS/C3 (DDU)

FEATURES / CARACTERÍSTICAS: **Ball Bearings**

APPLICATION / APLICACIÓN: For starter Mit-
suba, hydraulic pump VW-11130, 13130, 14140.
For various industrial applications.
REPLACES / REEMPLAZA:

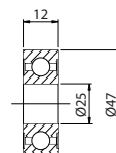


GR6005

2RS/C3 (DDU)

FEATURES / CARACTERÍSTICAS: **Ball Bearings**

APPLICATION / APLICACIÓN: Starter Motors
28MT (Volvo, Fiat Allis), Agricultural Equipa-
ments
REPLACES / REEMPLAZA:

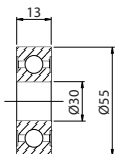


GR6006

2RS/C3 (DDU)

FEATURES / CARACTERÍSTICAS: **Ball Bearings**

APPLICATION / APLICACIÓN: Agricultural
equipment, Automotive applications, Engine
Maxion 3640, Frontal cover BR800
REPLACES / REEMPLAZA:

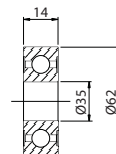


GR6007

2RS/C3 (DDU)

FEATURES / CARACTERÍSTICAS: **Ball Bearings**

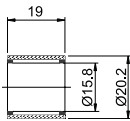
APPLICATION / APLICACIÓN: Alternator Nis-
san Pathfinder, Gear Box Tractor
REPLACES / REEMPLAZA:



GR6012



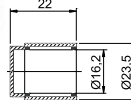
FEATURES / CARACTERÍSTICAS: Roller Bearing
APPLICATION / APLICACIÓN: For starter Bosch and Mercedes-Benz.
REPLACES / REEMPLAZA:
Bosch: F 006 919 232; **INA:** SCE 1012



GR6013



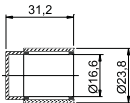
FEATURES / CARACTERÍSTICAS: Roller Bearing
APPLICATION / APLICACIÓN: For starter Bosch and Mercedes-Benz Till 7C
REPLACES / REEMPLAZA:
Bosch: 2 000 910 013



GR6171



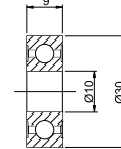
FEATURES / CARACTERÍSTICAS: Roller Bearing
APPLICATION / APLICACIÓN: For alternator Delco 55AMP.
REPLACES / REEMPLAZA:
Delco: 9437171



GR6200



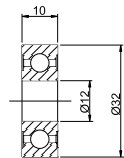
2RS/C3 (DDU)
FEATURES / CARACTERÍSTICAS: Ball Bearings
APPLICATION / APLICACIÓN: For alternator Bosch/Wapsa. F350, F600, F700, F750, Ford Willis, Toyota 80235 For various industrial applications.
REPLACES / REEMPLAZA:



GR6201



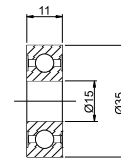
2RS/C3 (DDU)
FEATURES / CARACTERÍSTICAS: Ball Bearings
APPLICATION / APLICACIÓN: For alternator Mercedes-Benz and light series (Fiat, GM, VW) - Bosch and Wapsa (lado colector).
REPLACES / REEMPLAZA:



GR6202



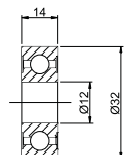
2RS/C3 (DDU)
FEATURES / CARACTERÍSTICAS: Ball Bearings
APPLICATION / APLICACIÓN: For alternator (BOSCH - WAPSA) and starter(JE) (Bosch - Mercedes-Benz/VW).
REPLACES / REEMPLAZA:



GR62201



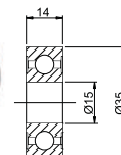
2RS/C3 (DDU)
FEATURES / CARACTERÍSTICAS: Ball Bearings
APPLICATION / APLICACIÓN: For alternator Mercedes-Benz 355, 362, 364, 608, 708, 709, 912, 1113, 1114, 1116, 1519, 1520, 1524, 1525, 1614, 1618, 1819, 1820, 1924, 1929, 1932, 1934, 2013, 2014, 2016, 2018, 2213, 2214, 2215, 2219, 2220, Scania 112K, 112S, 112R, 112T, 142E, 142MA, Volvo, Bus and Trucks.
REPLACES / REEMPLAZA:



GR62202



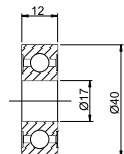
2RS/C3 (DDU)
FEATURES / CARACTERÍSTICAS: Ball Bearings
APPLICATION / APLICACIÓN: For alternator (Bosch - Scania/Mercedes-Benz -1938) For various industrial applications.
REPLACES / REEMPLAZA:



GR6203



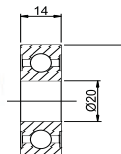
2RS/C3 (DDU)
FEATURES / CARACTERÍSTICAS: Ball Bearings
APPLICATION / APLICACIÓN: For alternator Non comercial vehicles
REPLACES / REEMPLAZA:



GR6204



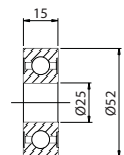
2RS/C3 (DDU)
FEATURES / CARACTERÍSTICAS: Ball Bearings
APPLICATION / APLICACIÓN: For alternator Wapsa F1000, F4000 e Cargo.
REPLACES / REEMPLAZA:



GR6205



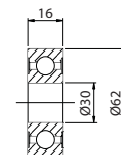
2RS/C3 (DDU)
FEATURES / CARACTERÍSTICAS: Ball Bearings
APPLICATION / APLICACIÓN: Automotive and industrial Application
REPLACES / REEMPLAZA:



GR6206



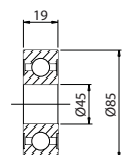
2RS/C3 (DDU)
FEATURES / CARACTERÍSTICAS: Ball Bearings
APPLICATION / APLICACIÓN: Automotive and industrial Application
REPLACES / REEMPLAZA:



GR6209



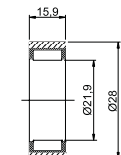
2RS/C3 (DDU)
FEATURES / CARACTERÍSTICAS: Ball Bearings
APPLICATION / APLICACIÓN: Automotive and industrial Application
REPLACES / REEMPLAZA:



GR6216



FEATURES / CARACTERÍSTICAS: Roller Bearing
APPLICATION / APLICACIÓN: For starter Bosch and Mercedes-Benz(JE)
REPLACES / REEMPLAZA:
INA: HK2216



ELECTRICAL

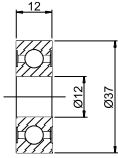
BEARINGS

GR6301

2RS/C3 (DDU)

FEATURES / CARACTERÍSTICAS: **Ball Bearings**

APPLICATION / APLICACIÓN: For front wheel - Motorcycles For various industrial applications.
REPLACES / REEMPLAZA:

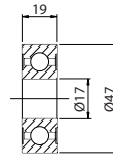


GR62303

2RS/C3 (DDU)

FEATURES / CARACTERÍSTICAS: **Ball Bearings**

APPLICATION / APLICACIÓN: Industrial application, Alternator Magnetti Marelli Fiat, trucks, Tractors
REPLACES / REEMPLAZA:

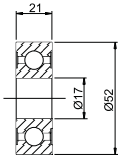


GR62304/17

2RS/C3 (DDU)

FEATURES / CARACTERÍSTICAS: **Ball Bearings**

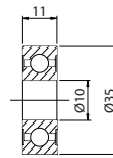
APPLICATION / APLICACIÓN: For alternator Bosch MBB, Scania, Volvo. For various industrial applications.
REPLACES / REEMPLAZA:



GR6300

FEATURES / CARACTERÍSTICAS: **Ball Bearings**

APPLICATION / APLICACIÓN: Industrial Application
REPLACES / REEMPLAZA:

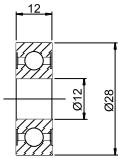


GR63001

2RS/C3 (DDU)

FEATURES / CARACTERÍSTICAS: **Ball Bearings**

APPLICATION / APLICACIÓN: For alternator Tipo, Tempra, F250, F1000 (HSD), Ranger, S10 2.5, Magneti Marelli - Tempra.
REPLACES / REEMPLAZA:

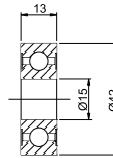


GR6302

2RS/C3 (DDU)

FEATURES / CARACTERÍSTICAS: **Ball Bearings**

APPLICATION / APLICACIÓN: For sheave MB 00625006302, for back wheel - Motorcycle. For various industrial applications.
REPLACES / REEMPLAZA:

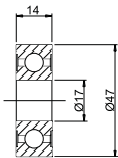


GR6303

2RS/C3 (DDU)

FEATURES / CARACTERÍSTICAS: **Ball Bearings**

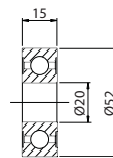
APPLICATION / APLICACIÓN: For alternator Mercedes-Benz LP 321, L/LO-608/708/709, LO-812, L-912, 1111, 1113, 1114, 1214, 1313, 1314, 1414, 1513, 1514, 1519, 1520, 1614, 2013, 2015, 2213, 2214, 2219, 2220, LS 1524, 0370, 0371(lado polia).
REPLACES / REEMPLAZA:



GR6304

FEATURES / CARACTERÍSTICAS: **Ball Bearings**

APPLICATION / APLICACIÓN: Engine VW, Industrial Application, Trucks
REPLACES / REEMPLAZA:

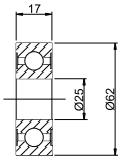


GR6305

2RS/C3 (DDU)

FEATURES / CARACTERÍSTICAS: **Ball Bearings**

APPLICATION / APLICACIÓN: For alternator Bosch - Lifter and Tractors Caterpillar. For various industrial applications.
REPLACES / REEMPLAZA:

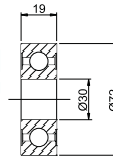


GR6306

2RS/C3 (DDU)

FEATURES / CARACTERÍSTICAS: **Ball Bearings**

APPLICATION / APLICACIÓN: For alternator Bosch T1/HD1 75 a 105A, for back wheel Townner. For various industrial applications.
REPLACES / REEMPLAZA:

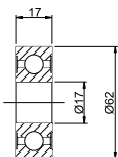


GR6403

2RS/C3 (DDU)

FEATURES / CARACTERÍSTICAS: **Ball Bearings**

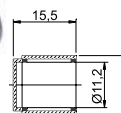
APPLICATION / APLICACIÓN: For alternator Bosch/MBB/Scania/Volvo (lado polia).
REPLACES / REEMPLAZA:



GR6713

FEATURES / CARACTERÍSTICAS: **Roller Bearing**

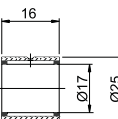
APPLICATION / APLICACIÓN: FOR Alternator Wapsa
REPLACES / REEMPLAZA:
INA: Bk45713



GR6716

FEATURES / CARACTERÍSTICAS: **Roller Bearing**

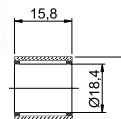
APPLICATION / APLICACIÓN: FOR Alternator Bosch 75A.
REPLACES / REEMPLAZA:
Bosch: 9 121 456 113; INA: NK 17/16X



GR6816

FEATURES / CARACTERÍSTICAS: **Roller Bearing**

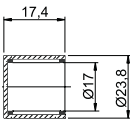
APPLICATION / APLICACIÓN: ...
REPLACES / REEMPLAZA:
Bosch: 2 000 910 002; INA: HK 1816



GR6853



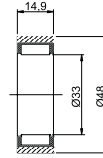
FEATURES / CARACTERÍSTICAS: Roller Bearing
APPLICATION / APLICACIÓN: FOR Alternator Wapsa Opala, Monza, D20.
REPLACES / REEMPLAZA:
INA: BK45853



GR6916



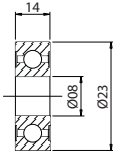
FEATURES / CARACTERÍSTICAS: Cylindrical roller bearings
APPLICATION / APLICACIÓN: FOR Alternator KB
REPLACES / REEMPLAZA:
Bosch: 2 000 910 005; **INA:** F-91916



GR B8 23D



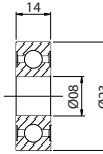
FEATURES / CARACTERÍSTICAS: Ball Bearings
APPLICATION / APLICACIÓN: Alternator Mitsubishi S930P 61201, SC8A05LHI, Tawner
REPLACES / REEMPLAZA:



GR B8 85D



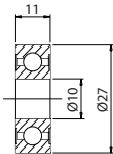
FEATURES / CARACTERÍSTICAS: Ball Bearings
APPLICATION / APLICACIÓN: Alternator Ford E7GZ- 10A304-A, Mitsubishi S930P63670, Motorcraft GEE-312, Kia
REPLACES / REEMPLAZA:



GR B10 50D



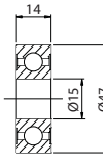
FEATURES / CARACTERÍSTICAS: Ball Bearings
APPLICATION / APLICACIÓN: Alternator Hitachi 6000G, 6000HL, Nissan 23120-58S01, Subaru 23721-AA010, Gol GII / GIII / G IV, John Deere
REPLACES / REEMPLAZA:



GR B15 86D



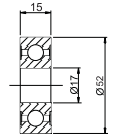
FEATURES / CARACTERÍSTICAS: Ball Bearings
APPLICATION / APLICACIÓN: Alternator Chrysler MD611397, Ford E8GY- 10A303-A, Mazda F811-18-W27, Mitsubishi TMB303LUX, S930P63070, Motorcraft GEE 316, Nissan 23120-58S11
REPLACES / REEMPLAZA:



GR B17 52D



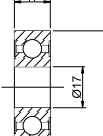
2RS/C3 (DDU)
FEATURES / CARACTERÍSTICAS: Ball Bearings
APPLICATION / APLICACIÓN: alternador KIA Poong Sung.
REPLACES / REEMPLAZA:



GR B17 99



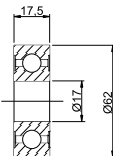
2RS/C3 (DDU)
FEATURES / CARACTERÍSTICAS: Ball Bearings
APPLICATION / APLICACIÓN: For alternator VW
REPLACES / REEMPLAZA:



GR B17 126



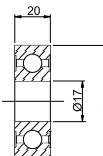
2RS/C3 (DDU)
FEATURES / CARACTERÍSTICAS: Ball Bearings
APPLICATION / APLICACIÓN: For alternator Bosch MBB 55 A.
REPLACES / REEMPLAZA:



GR B17 127



2RS/C3 (DDU)
FEATURES / CARACTERÍSTICAS: Ball Bearings
APPLICATION / APLICACIÓN: For alternator Bosch - MB, Scania 114/124, Volvo.
REPLACES / REEMPLAZA:



GR382



2RS/C3 (DDU)
FEATURES / CARACTERÍSTICAS: Ball Bearings
APPLICATION / APLICACIÓN: TOYOTA
REPLACES / REEMPLAZA:
KOYO 382

